



# GAT MONTHLY MEMBERSHIP PROGRESS REPORT

Results as of: 3/31/2022

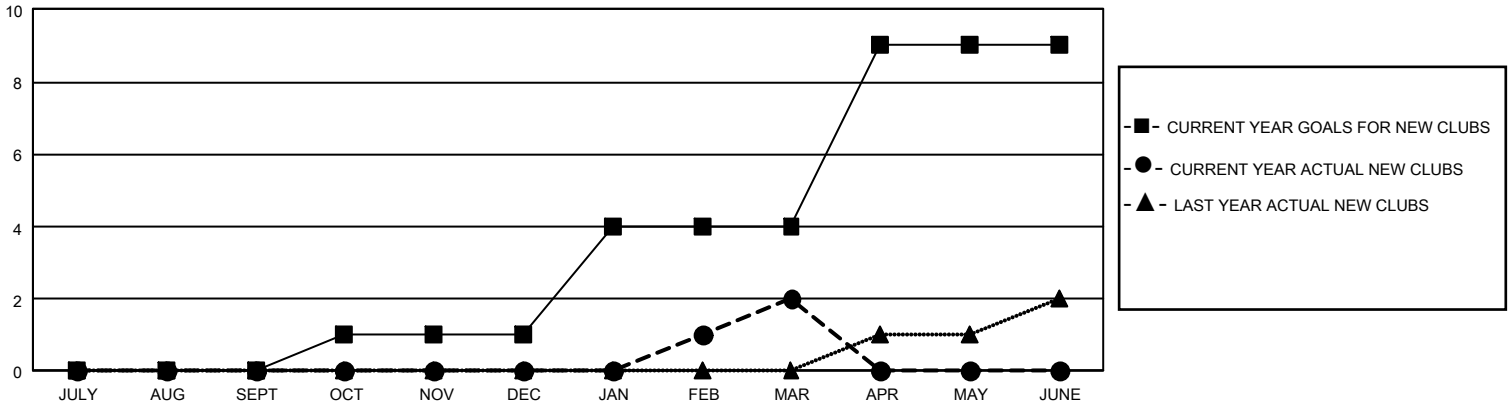
## GMT Constitutional Area 5 - J, Group G

REPORT DOES NOT INCLUDE CLUBS IN UNDISTRICTED AREAS.

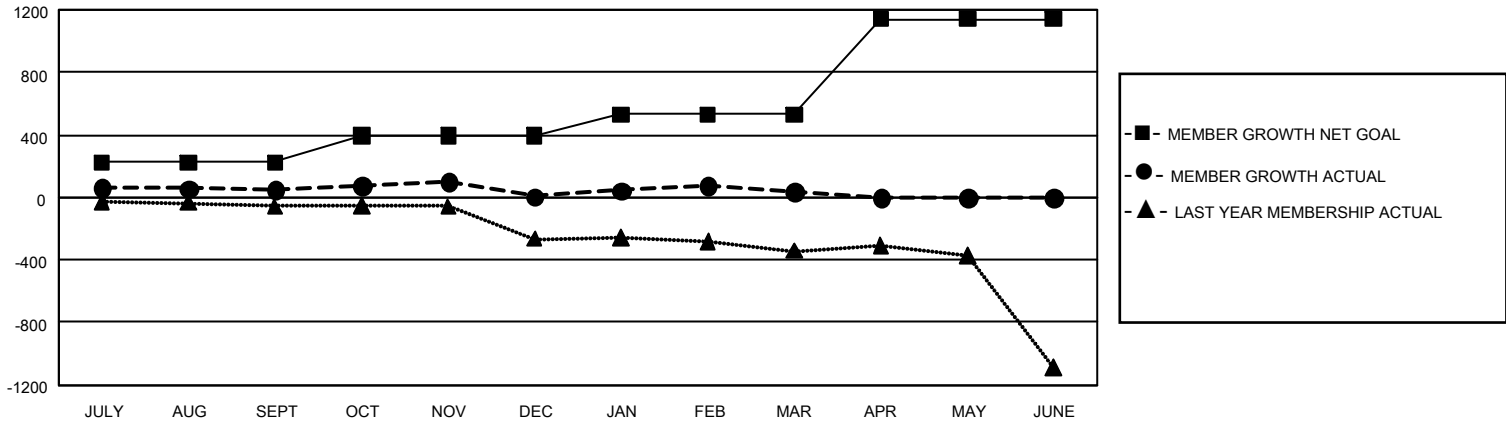
Clubs			
RESULTS FOR 2021-2022			
QUARTER	NEW CLUB GOAL	NEW CLUBS	DROPPED CLUBS
JULY/AUG/SEPT	0	0	2
OCT/NOV/DEC	3	0	2
JAN/FEB/MAR	9	2	0
APR/MAY/JUNE	15	0	0

Members			
RESULTS FOR 2021-2022			
QUARTER	MEMBER GROWTH NET GOAL	MEMBER GROWTH ACTUAL	DROPPED MEMBERS ACTUAL (including transfers)
JULY/AUG/SEPT	225	284	206
OCT/NOV/DEC	170	300	329
JAN/FEB/MAR	136	274	241
APR/MAY/JUNE	610	0	0

GOALS AND ACTUAL NEW CLUBS CUMULATIVE



GOALS AND ACTUAL MEMBERS CUMULATIVE



<b>DROPPED CLUBS: 4</b>	291 CLUBS OF 610 ADDED 1 OR MORE NEW MEMBERS	<b><u>GENDER DISTRIBUTION</u></b>	
		MALE 13,756 (79.13%) FEMALE 3,626 (20.86%) NON BINARY 0 (0.00%) PREFER NOT TO ANSWER 1 (0.01%)	
<b><u>DROPPED MEMBERS</u></b>		<a href="#">CLICK HERE FOR CUMULATIVE MEMBERSHIP DATA</a>	TOTAL FAMILY UNIT MEMBERS 5,050
DECEASED 137 CLUB CANCELLED 14 OTHER 625 <b>TOTAL 776</b>	FAMILY MEMBERS PAYING HALF DUES 2,920		